



# Diwali Picks

Samvat 2081  
(Technical)

Muhurat Trading on Friday, 1<sup>st</sup> Nov 2024  
Normal Trading Hrs 18.00 to 19:00

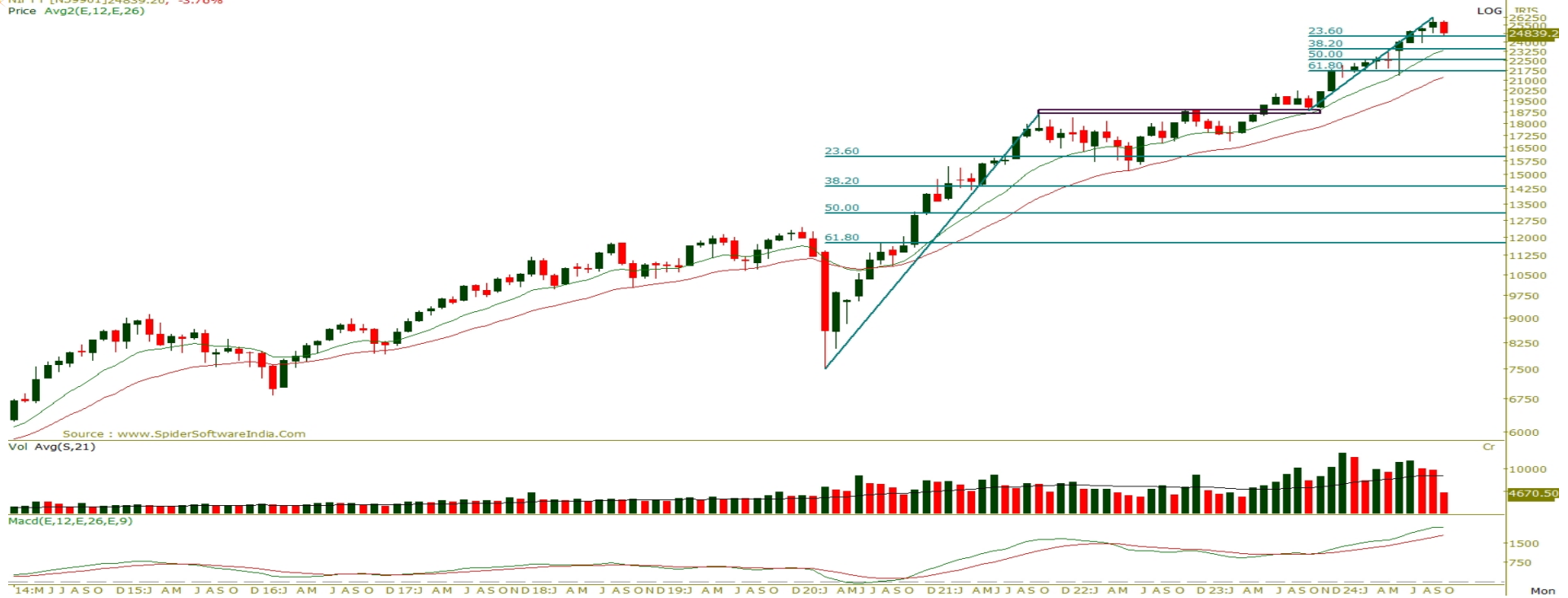


# Muhurat Picks

STOCK NAME	SECTOR	CMP	TARGET PRICE	POTENTIAL UPSIDE (%)
VOLTAS	CONSUMER DURABLE	1865	2368	27%
NATIONALUM	METAL	232	290	25%
TI	BREWERIES & DISTILLERIES	301	391	30%

Prices as on Oct 18, 2024

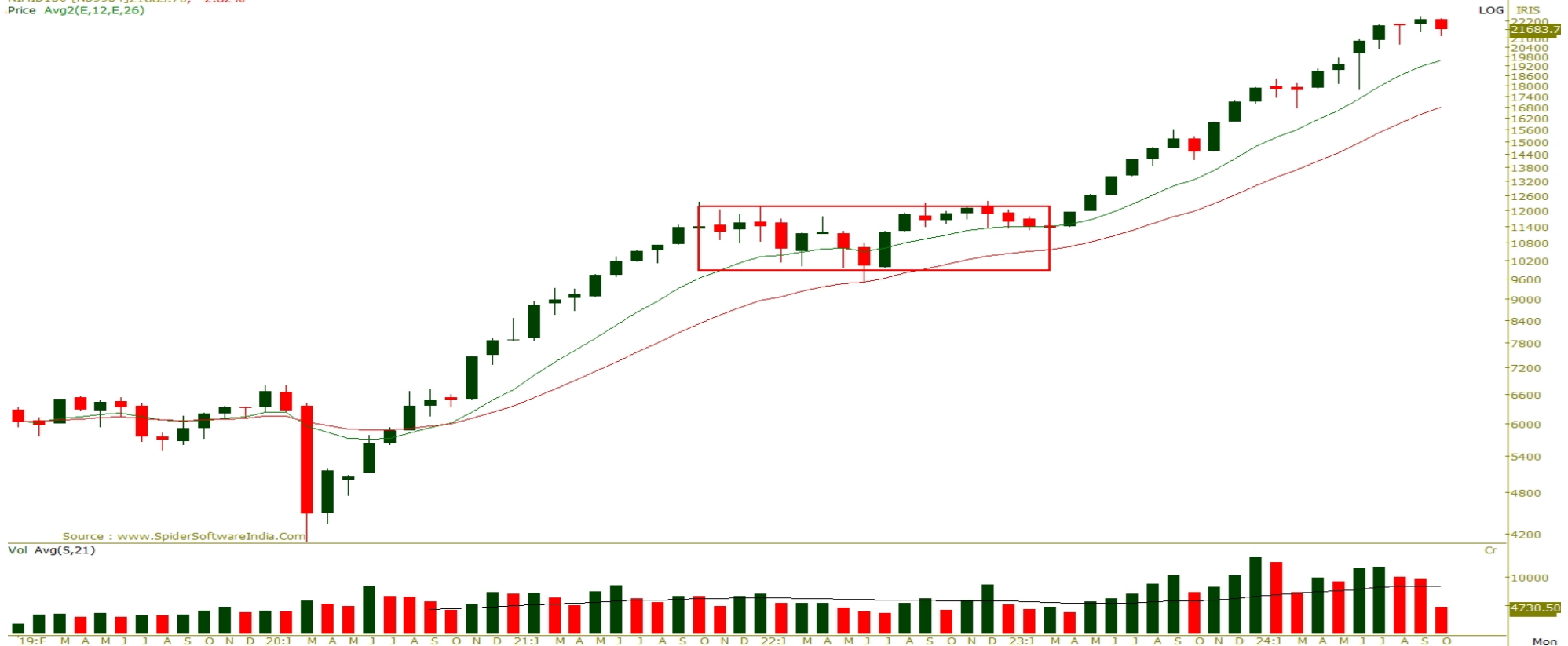
NIFTY [N59901]24839.20, -3.76%  
Price Avg2(E,12,E,26)



**NIFTY**

- The Nifty index has exhibited a strong bull run characterized by shallow retracements, specifically to the 23.6% and 38.2% Fibonacci levels, which is common during bullish phases. Looking back to 2020, the market saw a minor retracement to the 23.6% Fibonacci level in 2022, reinforcing the strength of the ongoing uptrend.
- In the current scenario, the rally from the October 2023 low of 18,837 to the recent high of 26277 positions the 23.6% retracement at 24,500, which acts as a key support level. If the market faces a deeper pullback, the next support lies at 23,400, corresponding to the 38.2% Fibonacci retracement level. These levels will be crucial to watch as they represent strong support zones that, if held, can keep the bullish structure intact.
- On the upside, the Nifty has a potential target of 29,109, which represents a 17% gain from current levels. This target corresponds to the 61.8% Fibonacci extension, a critical level that often serves as a bullish target in extended upward moves.
- On the weekly scale, since the March 2023 swing low, the index has repeatedly found support at the 20-week EMA, showcasing a consistent pattern of bullish mean reversion. This behavior reflects a healthy trend, where every minor pullback gets bought back, maintaining the upward trajectory. As of the most recent weekly close, the Nifty is trading close to this key moving average, indicating that a reversion could be in play, setting the stage for the next potential leg up in the market.

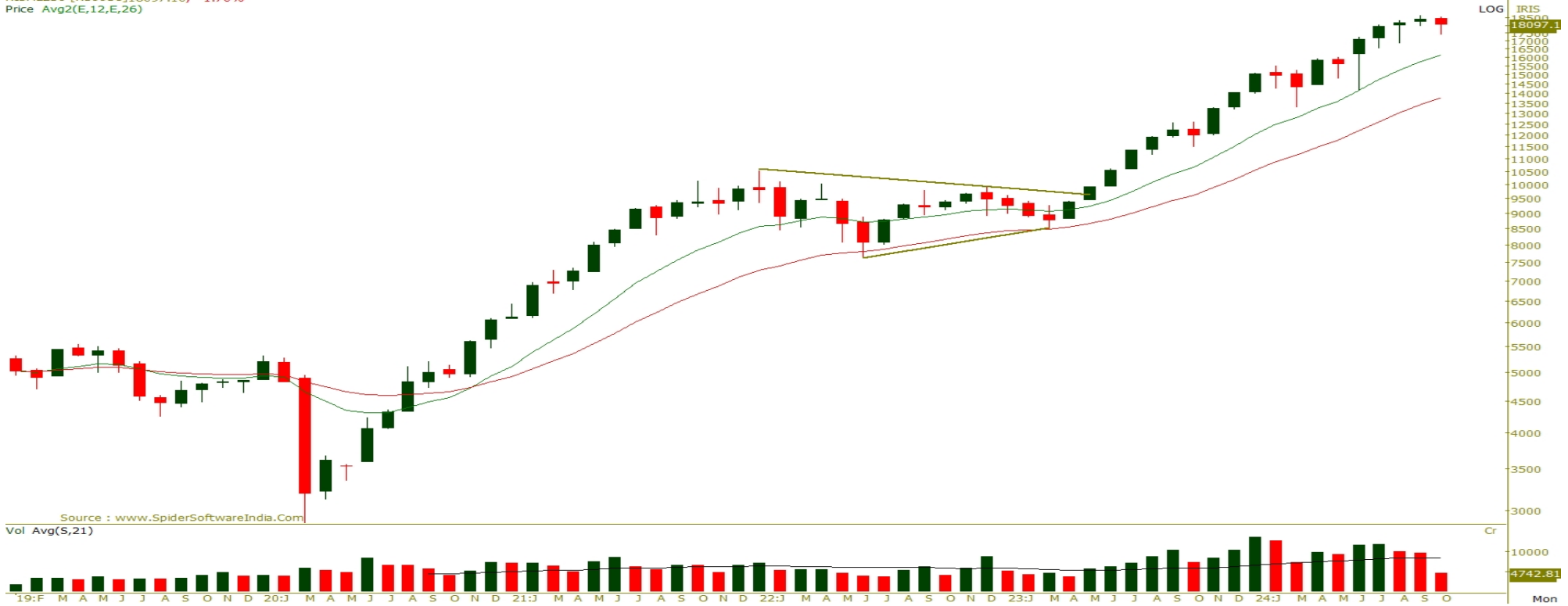
NIFTY MIDCAP150 [N59954] 21683.70, -2.82%  
Price Avg2(E,12,E,26)



### NIFTY MIDCAP 150

- The Nifty Midcap 150 index has displayed impressive price structural development on higher timeframes, especially since its breakout from the long consolidation phase that spanned between 2021 and 2023. This breakout marked the beginning of a sustained uptrend, with the index consistently maintaining its rising momentum above key moving averages, highlighting the strength of the ongoing bullish trend.
- On the weekly scale, the index has continued to form higher tops and higher bottoms, aligning the short-term trend with the broader, long-term uptrend. This consistency between timeframes further solidifies the bullish outlook for the index. During the current uptrend, the index has repeatedly found support at its 12-week and 26-week EMAs, signaling a healthy and well-supported trend. These EMAs act as critical dynamic support levels, reinforcing the strength of buyers during pullbacks.
- Looking ahead, the Nifty Midcap 150 index has a potential upside target of 25,800, which represents the 100% Fibonacci extension level from the most recent swing. On the downside, the crucial support level to watch is 19,884. If the index holds above this level, it would continue to signal strength in the ongoing bullish trend, while any pullback towards this level may present buying opportunities for further upside potential.

NISM250 [N59956]18097.10, -1.70%  
Price Avg2(E,12,E,26)



### NIFTY SMALLCAP 250

- The Nifty Smallcap 250 index has shown strong price structural progress on higher timeframes, particularly following its breakout from a triangular pattern on the monthly scale. This breakout signaled the start of a sustained upward trend, with the index consistently staying above key moving averages, emphasizing the strength of its bullish momentum.
- On the weekly timeframe, the index continues to exhibit higher tops and bottoms, reinforcing the alignment between the short-term and long-term uptrend. This consistency across timeframes strengthens the bullish outlook for the index. During its current ascent, the index has regularly found support at its 12-week and 26-week EMAs, which serve as dynamic support levels, highlighting the resilience of buyers during market pullbacks.
- Regarding market breadth, 136 out of 250 stocks within the Nifty Smallcap 250 are trading above the 20-week EMA, while 114 stocks are below it, signaling moderate bullish breadth.
- Looking forward, the Nifty Smallcap 250 index has a potential upside target of 21,600, corresponding to the 100% Fibonacci extension of the latest swing. On the downside, critical support lies at 16,970. A hold above this level would confirm continued strength in the uptrend, while any pullback towards this area could provide an opportunity for further gains.

VOLTAS [N3718] 1865.30, 1.09%  
Price Avg2(E,12,E,26)



### VOLTAS- Back To The Wining Streak

- VOLTAS has shown robust price structural developments on higher timeframes. The stock has consistently formed higher bottoms, reflecting a strong upward trend. On the monthly scale, significant bullish change in polarity have been observed. The first instance occurred in March 2016, when the stock emerged from its underperformance period between 2007-2016, leading to a price appreciation of approximately 250%. The second polarity shift took place in 2023, and since then, the stock has consistently made higher tops and higher bottoms. Most recently, a similar polarity pattern was formed in June 2024.
- On the weekly scale, VOLTAS is experiencing bullish mean reversion from its 10-week EMA, a trend that began in December 2023 following a double top breakout. In the most recent week, the stock once again pulled back from the 10-week EMA, signaling a healthy trend and indicating that the stock is likely to continue its upward trajectory.
- Despite market volatility, VOLTAS has maintained a strong relative strength, with short- to long-term moving averages (10, 26, 50, 100, and 200) all in an upward trend, aligning with price action and reinforcing the stock's strength across timeframes.
- The ratio chart of VOLTAS versus the Nifty presents a promising setup on higher timeframes. The ratio line has demonstrated a change in polarity, having reversed from multi-year swing highs seen in 2007, 2010, and 2016, with the key reversal points observed in November 2023. Recently, the ratio line experienced a breakout from a base pattern, further reinforcing the bullish structural outlook for VOLTAS. This indicates that the stock is likely to continue its outperformance in the market.
- Looking ahead, the stock has potential upside with a target of 2368, while a stop loss at 1660 on a closing basis is recommended for effective risk management.

NATIONALUM [N6364] 232.12, 10.38%  
Price Avg2(E,12,E,26)



### NATIONALUM- Momentum Reignited

- On the monthly scale, NATIONALUM has emerged from a prolonged underperformance period spanning from 2008 to 2022. This shift in trend is marked by a change in polarity, where previous resistance levels have now acted as support, as highlighted on the chart. After this shift, the stock has continued its upward trajectory.
- On the weekly scale, the stock has recently displayed a range shift from polarity levels in August 2024 and October 2024. This indicates a healthy uptrend, as dips are being bought back from key pivot levels, further reinforcing a bullish outlook for the stock.
- NATIONALUM is well-positioned above its short- to long-term moving averages (10, 26, 50, 100, and 200 EMAs), with recent weeks showing a surge in volume above the 20-week average. The MACD indicator on the weekly scale remains in buy mode, suggesting that the positive price trend is supported by both volume and momentum.
- The ratio chart of NATIONALUM versus the Nifty shows a breakout from a sloping trendline connecting the swing points of 2008 and 2022, which occurred in January 2024. The ratio line has since formed rising bottoms and is currently at its 52-week high, indicating a robust chart structure. This reinforces the stock's potential to outperform the broader market.
- Looking ahead, the stock has potential upside with a target of 290, while a stop loss at 208 on a closing basis is recommended for effective risk management.



### TI (TILAKNAGAR INDUSTRIES LTD) - SPOTLIGHT !

- TI has exhibited remarkable price developments on higher timeframes, making a strong comeback after prolonged underperformance from 2010 to 2021. Since then, the stock has maintained a consistent upward trend, with a key price breakout in May 2023, surpassing the multiyear high from 2010. This breakout was accompanied by a surge in volume, signifying a robust structural shift in the stock's price dynamics. The stock is now trading in a new phase of its uptrend, reinforcing its bullish outlook.
- On the weekly scale, the price action aligns with the longer-term trend. Since the beginning of this upward movement, TI has consistently held its position above the 50-week EMA, with any pullbacks being quickly bought up, indicating a healthy, sustained trend. Recent price action shows a change in polarity, as the prior swing highs from November 2023 and June 2024 now act as strong support levels, reinforcing the bullish price structure.
- The weekly MACD indicator has formed a double-bottom pattern and is now rising into positive territory, signaling an acceleration in momentum. This reinforces the stock's upward trajectory and strengthens the bullish outlook.
- The ratio chart of TI versus the Nifty presents a compelling setup. The ratio line has seen a significant upswing following a double-bottom formation at the polarity level of the multiyear high from 2014. This indicates that TI is well-positioned for a strong growth trajectory, marking it as a potential outperformer in the market.
- Looking ahead, the stock has potential upside with a target of 391, while a stop loss at 267 on a closing basis is recommended for effective risk management.



**Terms & Conditions** - For Investors We, Research Analyst of GEPL Capital, hereby certify that all of the views expressed in this research report accurately reflect our views about the subject issuer(s) or securities. We, also certify that no part of our compensation was, is, or will be directly or indirectly related to the specific recommendation(s) or view(s) in this report.

**Disclosure:** - This document has been prepared by Research Department of GEPL Capital Pvt. Ltd. (hereinafter referred to as GEPL Capital) and this report is for personal information of the selected recipient/s and does not constitute to be any investment, recommendation, prospectus, offering circular or legal or taxation advice to you. This research report does not constitute an offer, invitation or inducement to invest in securities or other investments and GEPL Capital is not soliciting any action based upon it. This report is not for public distribution and has been furnished to you solely for your general information and should not be reproduced or redistributed to any other person in any form. This report does not constitute a personal recommendation or take into account the particular investment objectives, financial situations, or needs of individual clients. Before acting on any advice or recommendation in this material, investors should consider whether it is suitable for their particular circumstances and, if necessary, seek professional advice. The price and value of the investments referred to in this material and the income from them may go down as well as up, and investors may realize losses on any investments. Past performance is not a guide for future performance, future returns are not guaranteed and a loss of original capital may occur. GEPL Capital makes no representation or warranty, express or implied, as to, and does not accept any responsibility or liability or obligation with respect to, the fairness, accuracy, completeness or correctness of any information or update information or opinions contained herein. All investments including Future and Options are involving risks and investor should exercise prudence in making their investment decisions. The report should not be regarded by the recipients as a substitute for the exercise of their own judgment. Any opinions expressed in this report are subject to change without notice and may differ or be contrary to opinions expressed by other business areas or GEPL Capital as a result of using different assumptions and criteria. Foreign currency rates of exchange may adversely affect the value, price or income of any security or related instrument mentioned in this report. The information contained in this report has been obtained from sources that are considered to be reliable. However, GEPL Capital has not independently verified the accuracy or completeness of the same. Neither GEPL Capital nor any of its affiliates, its directors or its employees accepts any responsibility of whatsoever nature for the information, statements and opinion given, made available or expressed herein or for any omission therein. GEPL Capital and its affiliates and/or their officers, directors and employees may have similar position in any securities mentioned in this document (or in any related investment) and may from time to time add to or dispose of any such securities (or investment). GEPL Capital specifically prohibits the redistribution of this material in whole or in part without the written permission of GEPL Capital and GEPL Capital accepts no liability whatsoever for the actions of third parties in this regard. GEPL Capital or its director or its research analysts or its associates or his relatives and/or its affiliates and/or employees do not have actual/beneficial ownership of one per cent or more securities of the subject company at the end of the month immediately preceding the date of publication of the research report. Our sales people, traders, and other professionals or affiliates may provide oral or written market commentary or trading strategies to our clients that reflect opinions that are contrary to the opinions expressed herein, and our proprietary trading and investing businesses may make investment decisions that are inconsistent with the recommendations expressed herein.

**Disclaimers in respect of jurisdiction:** This report is not directed to, or intended for distribution to or use by, any person or entity who is a citizen or resident or located in any locality, state, country or other jurisdiction where such Distribution, publication, reproduction, availability or use would be contrary to law or regulation or what would subject GEPL Capital its affiliates to any registration or licensing requirement within such jurisdiction. If this report is inadvertently sent or has reached any individual the same may be ignored and brought to the attention of the sender. This document may not be reproduced, distributed or published for any purposes without prior written approval of GEPL Capital.

**Analyst Certification:** The views expressed in this research report reflect the personal views of the analyst(s) about the subject securities or issues. Compensation of our Research Analysts is not based on any specific merchant banking, investment banking or brokerage service transactions. Research Analysts of this report have not received any compensation from the companies mentioned in the report in the preceding twelve months.

GEPL Capital Private Limited is a SEBI registered Research Analyst entity bearing SEBI Reg. No. "INH000000081" under SEBI (Research Analysts) Regulations, 2014.

**Reg./Corp. Office:** D-21 Dhanraj Mahal, CSM Marg, Colaba, Mumbai 400 001 Contact No +91 22 66182400

**SEBI Reg. No.** NSE/NSEF&O/CD - INB230993934, INF230993934 & INE230993934. BSE/BSE F&O- INB010993934 & INF010993934,

For more information visit us at: [www.geplcapital.com](http://www.geplcapital.com)

**Disclaimer:** Investments in securities market are subject to market risks, read all the related documents carefully before investing. Investors must make their own investment decisions based on their specific goals, financial position & risk appetite. The content provided herewith is purely for investor awareness only



# Diwali Picks

**Samvat 2081**  
**(Fundamental)**

**Muhurat Trading on Friday, 1<sup>st</sup> Nov 2024**

**Normal Trading Hrs 18:00 to 19:00**



# Muhurat Picks 2024

STOCK NAME	SECTOR	CMP	TARGET PRICE	POTENTIAL UPSIDE (%)
The Indian Hotel Co Ltd	Hotel	687	859	25%
CDSL Ltd	Capital Market	1579	2017	28%
Jindal saw Ltd	Steel	365	471	27%
LT Foods LTD	FMCG	419	512	22%
Sanghvi Movers LTD	EPC	458	600	31%

Prices as on Oct 18, 2024

## Business Operation

IHCL South Asia's largest hospitality enterprise, combines Indian warmth with world-class service. Its brands include Taj, SeleQtions, Vivanta, and Ginger, catering to various segments from luxury to lean luxe. Founded by Tata Group's Jamsetji Tata, IHCL opened its first hotel, The Taj Mahal Palace, in Bombay in 1903. Today, it operates and develops hotels worldwide.

## Investment Rationale

### A. Diverse Hotel Portfolio with high end brands in key cities

The company manages 222 hotels globally under brands like Taj, SeleQtions, Vivanta, Ginger, Ama, Qmin, and Taj SATS, with 70% in luxury and upper-scale segments. 41% of these hotels are in Tier 1 cities like Mumbai, Delhi, and Bengaluru. The strategy targets mid-scale to luxury segments, benefiting from 9% and 13% growth in top-8 cities and key leisure markets. Supply growth is set to lag behind demand, supporting healthy occupancy rates and average room rates (ARR).

### B. IHCL set for double-digit ARR growth in FY25, driven by strong demand and industry tailwinds

IHCL's ARR is expected to grow by 10% to 15% in FY25, driven by strong industry tailwinds. Room demand is projected to grow by 10%, outpacing a 5% CAGR increase in room supply over the next 2 to 3 years. This imbalance will support sustainable double-digit growth in ARR, fueling overall growth for IHCL. Additional factors contributing to ARR growth include increased air travel due to strong domestic demand for leisure travel, corporate travel, and wedding events. We anticipate ARR will continue to experience double-digit growth, supported by rising room and foreign travel demand.

### C. Strategic shift to management contracts drives IHCL's scalable growth and leaner balance sheet by FY27

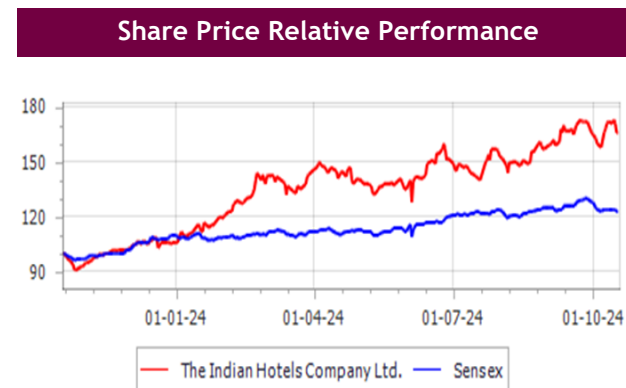
The management has decided to expand its inventory primarily through management contracts, which are less capital-intensive compared to the owned/leased model. From FY25 to FY27, 79% of new room additions will be via management contracts, offering higher profitability. By FY27, the room inventory mix will shift to 53% management contracts from 43% in FY24. This shift will create a balanced portfolio, enabling IHCL to scale up while maintaining a lean balance sheet and achieving higher returns on capital employed. In FY25, IHCL signed 52 hotels and opened 20 hotels, with an additional 90 hotels in the pipeline.

### D. Outlook And Recommendation.

We model a Revenue/PAT CAGR of 15%/12% and estimate IHCL to clock PAT of Rs 1,778 Cr by FY27E. IHCL is trading at forward EV/EBITDA (x) of 39 and we value at 37(x) FY27E and We Recommend BUY on Indian Hotel Co Ltd with Target Price of Rs. 859.

Script Details	
BSE Group	A
BSE Code	500850
NSE Code	INDHOTEL
Bloomberg Code	IH IN
Market Cap (INR Cr.)	97,740
Free Float (%)	61.9%
52wk Low/High	721/371
Beta (1yr Nifty 50)	0.00
Face Value (INR)/ D. Yield (%)	1/0.3
Total paid Up Shares (Mn.)	1423.4

Financial Highlights					
Year	Revenue	EBITDA	PAT	PE Ratio (x)	EV/EBITDA (x)
FY24	6,769	474	1,285	76.1	40.6
FY25E	7,750	2,441	1,356	72.1	7.2
FY26E	8,874	2,795	1,553	62.9	6.3
FY27E	10,161	3,201	1,778	55.0	5.5



## Business Operation

CDSL is India's leading securities depository by incremental growth in BO accounts and the highest number of Depository Participants. It is the 2nd largest by market share. CDSL's revenue comes from transaction, account maintenance, and settlement charges from DPs, as well as fees and charges from companies. Established in 1999, CDSL aims to offer reliable and secure depository services at affordable prices.

## Investment Rationale

### A. Higher retail participation and better market position will drive growth going ahead

CDSL has dominant market share of 76% /88% in dmart accounts/ New dmart opening. As of Jun, CDSL has 12.5 Cr registered Dmart accounts, a 42% YoY growth from 8.8 Cr accounts in June 2023. CDSL Profit grew by 65% to INR 420 Cr and revenue grow by 63% to INR 812 Cr. The depository market has grown by 15% CAGR in last 5 Years and expected to grow by 13% CAGR by FY28. The growth will be driven by high retail participation, the average IPO application from retail investors increased by 13.7 lakh vs 5.57 lakh in FY23. Moreover, the Dmart penetration in India is expected to increasing 13% by FY30 from 8%. The increased in dmart penetration is another key growth lever for the CDSL. CDSL major revenue contribution come from Transaction charges followed by Annual Issuer Income and IPO. Profit is expected to grow at 11% to 12% CAGR over FY25 to FY27.

### B. High Operating leverage and fixed cost nature expenses led high margins and probability

CDSL operating profit has grown by 4.4x at INR 488 Cr from INR 89 Cr in FY20. Margins has increase from 42% in FY20 to 60% in FY24. The growth 50% CAGR in EBITDA is a function of operating leverage. Employee cost and Technology cost are 2 key cost component for CDSL which account for 49% and these cost are primary fixed in nature. IPF and DP incentive schemes contributed 12% of cost and is link to profits. Hence, operating is higher in CDSL. We expect margins to remain at 61% to 62% from FY25 to FY26.

### C. Strong Financials with low leverage

CDSL remains net debt-free, with only INR 1 crore in negotiable debt, thanks to its asset-light business model. Its property, plant, and equipment (PPE) mainly consist of office and technology equipment, requiring minimal capital expenditure, with 2%-3% of operating profit allocated to capex. The low debt results in minimal finance and depreciation costs, supporting strong profit growth. CDSL has reported a 28% and 30% CAGR over the last 3 and 5 years, respectively. Its assets primarily consist of investments and cash, ensuring high liquidity.

### D. Outlook And Recommendation.

We model a Revenue/PAT CAGR of 15%/11% and estimate CDSL to clock PAT of Rs 655 Cr by FY27E. CDSL is trading at forward PE (x) of 49.3 and we value at 60(x) FY27E and Recommend BUY on CDSL with Target Price of Rs. 2,017.

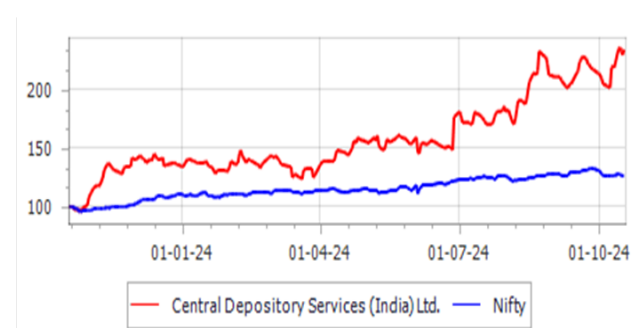
## Script Details

BSE Group	0
BSE Code	0
NSE Code	CDSL
Bloomberg Code	CDSL IN
Market Cap (INR Cr.)	32,291
Free Float (%)	92.5%
52wk Low/High	0/0
Beta (1yr Nifty 50)	0.00
Face Value (INR)/ D. Yield (%)	10/1.4
Total paid Up Shares (Mn.)	209.0

## Financial Highlights

Year	Revenue	EBITDA	PAT	PE Ratio (x)	EV/EBITDA (x)
FY24	812	57	480	67.3	48.6
FY25E	934	542	495	65.2	32.4
FY26E	1,074	623	569	56.7	28.1
FY27E	1,235	716	655	49.3	24.5

## Share Price Relative Performance



## Business Operation

Jindal Saw Ltd. started its operation in the year 1984. It became the first company in India to manufacture submerged arc welded pipes using the internationally acclaimed U-O-E technology. The product line of the company also includes Large Diameter Pipes, Line Pipes, Ductile Iron (DI) Pipes, seamless tubes etc.

## Investment Rationale

### A. Jindal saw to drive probability on the back of debottleneck and Value add product

Jindal Saw reported strong 1QFY25 performance, driven by increased value-added products. Its subsidiary, Jindal Hunting Energy Services Ltd (JHESL), which began operations in 3QFY24, achieved 80-85% capacity utilization and turned profitable in 1QFY25. The company is exploring new value-added products to serve India's OCTG segment. Jindal Saw is increasing capacity by 10-20% through debottlenecking, without additional CAPEX, to meet rising demand, particularly for smaller diameter pipes. It aims to supply 200,000 tonnes from Sathavahana at peak utilization, with debottlenecking expected to add 50,000 tonnes next year.

### B. Healthy Order book, makes earning visibility in medium to long term

As of June 2024, Jindal Saw reported an order book of INR 1.65 billion, ensuring strong earnings visibility for FY25. The order book primarily comprises iron and steel pipes, valued at \$1.632 billion, and pellets at \$15 million. Notably, 32% of the order book is attributed to exports. The breakdown of the order book shows that 70% comes from the water sector, 25% from oil and gas, and 5% from other areas. The government's emphasis on water infrastructure and the anticipated increase in global oil and gas capital expenditure are expected to drive the company's growth in the medium to long term.

### C. Strategic debt increase for operational growth; targeting long-term debt reduction by FY26.

The company's standalone debt has risen from INR 3,200 Cr to INR 3,900 Cr, primarily driven by heightened working capital needs associated with ramping up operations and securing raw materials at stable prices. This strategic move positions the company for growth, as it enhances operational efficiency and cost stability. Importantly, the company aims to reduce its long-term debt by FY26, indicating a commitment to financial health and potentially improving investor confidence.

### D. Outlook And Recommendation.

We model a Revenue/PAT CAGR of 19%/13% and estimate JINDALSAW to clock PAT of Rs 2,649 Cr by FY27E. JINDALSAW is trading at forward PE (x) of 9 and we value at 11(x) FY27E and Recommend BUY on DRREDDY with Target Price of Rs. 471.

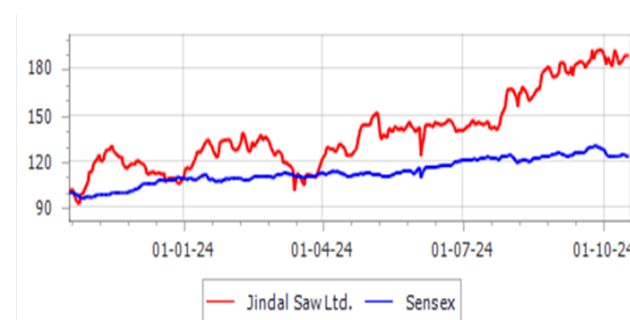
## Script Details

BSE Group	A
BSE Code	500378
NSE Code	JINDALSAW
Bloomberg Code	JS AW IN
Market Cap (INR Cr.)	23,393
Free Float (%)	68.4%
52wk Low/High	384/165
Beta (1yr Nifty 50)	0.00
Face Value (INR)/ D. Yield (%)	1/0.5
Total paid Up Shares (Mn.)	639.5

## Financial Highlights

Year	Revenue	EBITDA	PAT	PE Ratio (x)	EV/EBITDA (x)
FY24	20,958	1,467	1,851	12.6	7.5
FY25E	24,940	3,866	1,870	12.5	4.5
FY26E	29,678	4,600	2,226	10.5	3.8
FY27E	35,317	5,474	2,649	8.8	3.2

## Share Price Relative Performance



## Business Operation

LT Foods is a global leader in rice-based foods, offering basmati, organic, and convenience products. With operations in India and markets worldwide, its key regions include the US, UK, Europe, and the Middle East. The portfolio includes a variety of rice types, including organic and quick-cooking options.

## Investment Rationale

### A. Established market position and strong track record in the basmati rice industry

LTFL's India business is thriving, with exports still leading in Basmati rice but a growing focus on the domestic market. The company has expanded its distribution network and increased marketing efforts to enhance brand recall. LTFL holds a 30.1% market share in India's Basmati rice sector, aiming to boost this to 33% in the next 5-6 quarters, driven by rising consumer preference for premium rice and higher per capita income. The India business has grown at a 31.5% CAGR in revenue and 20.5% in volume over the past three years. Projected growth for the India segment is around 15% CAGR, outpacing the international segment's 8-10% CAGR. LTFL's extensive distribution network, comprising over 1,200 distributors and 176,000 retail outlets in India, along with international partners, supports its expanding market presence.

### B. Diversified revenue profile with strong brand portfolio and growing product diversification

LT Group, a global leader in rice with a presence in 80 countries, derives 60-70% of its revenue from exports. Daawat is its top brand, and basmati rice accounts for over 80% of revenue. The company also ventures into organic and convenience foods. Despite a 16% revenue drop in organic products due to US import duties, it's growing at a 12% CAGR. LT is mitigating this with a new soya plant in Uganda and expanding its high-margin health and convenience food segment.

### C. LT Foods' new Harlow facility set to drive growth in the £1 billion U.K. rice market

LT Foods has opened a cutting-edge 100,000 sq. ft. facility in Harlow, U.K., to cater to the booming demand for high-quality rice products. With an initial investment of £7 million and plans to reach £50 million, the facility aims to generate £50 million in revenue annually within two years and £100 million in five years. It boasts a production capacity of 60,000 tonnes per year and will supply both branded and private-label products to major U.K. retailers, creating local jobs and positioning LT Foods for substantial growth in the £1 billion U.K. rice market.

### D. Outlook And Recommendation.

We model a Revenue/PAT CAGR of 15%/13% and estimate LT FOODS to clock PAT of Rs 5,975 Cr by FY27E. LTFOOD is trading at forward PE (x) of 14.9 and we value at 19(x) FY27E and Recommend BUY on LTFOODS with Target Price of Rs. 512.

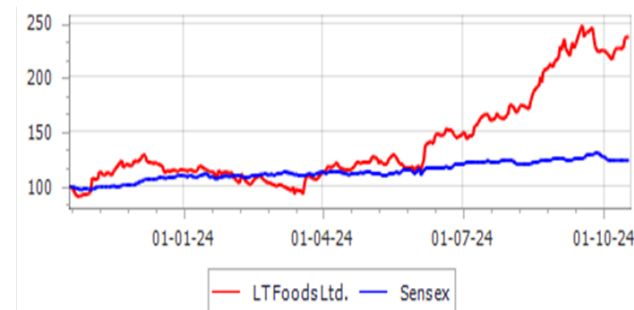
## Script Details

BSE Group	A
BSE Code	532783
NSE Code	LTFOODS
Bloomberg Code	LTFOODS IN
Market Cap (INR Cr.)	14,515
Free Float (%)	49.0%
52wk Low/High	448/151
Beta (1yr Nifty 50)	0.00
Face Value (INR)/ D. Yield (%)	1/0.5
Total paid Up Shares (Mn.)	347.3

## Financial Highlights

Year	Revenue	EBITDA	PAT	PE Ratio (x)	EV/EBITDA (x)
FY24	7,772	544	609	23.8	14.7
FY25E	8,938	1,207	670	21.7	14.5
FY26E	10,279	1,388	771	18.8	12.6
FY27E	11,821	1,596	887	16.4	11.0

## Share Price Relative Performance



## Business Operation

Sanghvi Movers Limited (SML) is the largest crane rental company in India. SML is a BS OHSAS 18001:2007 certified company. It is committed to being a top globally-ranked company in its core business with exceptional business ethics and morals.

## Investment Rationale

### A. Established market share with diverse crane portfolio will drive growth in SML

SML is the largest crane rental company in India and Asia and the 5th largest in the world with market share of 40% to 45% in the domestic crane rental market and as 60% to 65% in the high end crane market. Currently, SML has a fleet of 361 medium to large sized heavy duty telescopic and crawler cranes ranging from 20 to 1000 MT. Out of 361, 264 cranes are over of 100 MT capacity. This fleet are majorly used in construction of various industrial plant like power, steel, cement, oil&gas. The major revenue is contributed by windmill sector around 46% followed by wind EPC, Refinery&oil, steel (11%, 10%,7%) respectively. Further, High capital cost required for higher capacity cranes is an entry barrier for smaller players and hence, the company enjoys a dominant position in the segment.

### B. Turnaround in H2FY25, utilization level to reach more than 80% couple with improvement in Yield led to high probability

In Q1FY25, SML's capacity utilization stood at 77%, down from 84% QoQ basis, the average blended yield decreasing to 2.02% from 2.2% in Q4FY24. This decline was mainly due to the monsoon season and slowdown in project execution due to general election. Q2FY25 is expected to remain subdued, with utilization likely to fall below 75% and yield falling below 2%. However, a recovery is anticipated in H2FY25, as management has guided for over 80% utilization and a 2% yield. The current order book for FY25 is INR 774 crore, with INR 330 crore coming from renewal and EPC projects, ensuring healthy earnings visibility. Demand for cranes is expected to pick up in H2FY25, driven by sectors such as wind energy, steel, cement, thermal power, and infrastructure. Overall, revenue is projected to grow by 23% in FY25.

### C. Low leverage, strategic capex fueling growth and efficiency at SML

SML's low-leverage balance sheet is well-positioned to support its capex plans. The company maintains a comfortable debt-to-equity ratio of 0.29x, with total debt at INR 292 Cr and liquid assets, including cash and investments, at INR 152 Cr. As of June, SML has spent INR 81 Cr on acquiring 16 new cranes and 2 used cranes, with capacities ranging from 110T to 800T. The planned capex for FY25 is expected to be around INR 200 Cr, which will enhance yield through diversified portfolio and improved capacity utilization.

### D. Outlook And Recommendation.

We model a Revenue/PAT CAGR of 23%/16% and estimate DRREDDY to clock PAT of Rs 288 Cr by FY27E. SANGHVIMOV is trading at forward PE (x) of 14.9 (Sharp discount to historical median of 23x) and we value at 18(x) FY27E and Recommend BUY on SANGHVI MOVER with Target Price of Rs. 600.

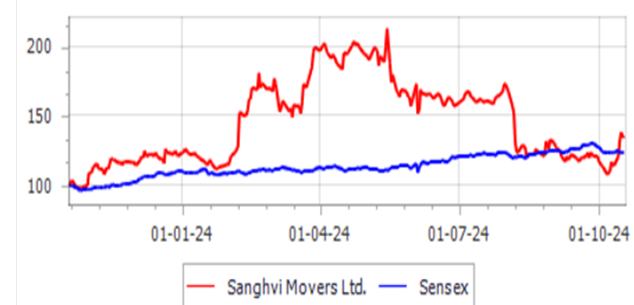
## Script Details

BSE Group	A
BSE Code	530073
NSE Code	SANGHVIMOV
Bloomberg Code	SGM IN
Market Cap (INR Cr.)	3,937
Free Float (%)	76.4%
52wk Low/High	742/311
Beta (1yr Nifty 50)	0.00
Face Value (INR)/ D. Yield (%)	1/0.7
Total paid Up Shares (Mn.)	86.6

## Financial Highlights

Year	Revenue	EBITDA	PAT	PE Ratio (x)	EV/EBITDA (x)
FY24	619	43	187	21.1	11.0
FY25E	761	380	190	20.7	46.1
FY26E	936	468	234	16.8	37.5
FY27E	1,151	576	288	13.7	30.5

## Share Price Relative Performance





**Terms & Conditions** - For Investors We, Research Analyst of GEPL Capital, hereby certify that all of the views expressed in this research report accurately reflect our views about the subject issuer(s) or securities. We, also certify that no part of our compensation was, is, or will be directly or indirectly related to the specific recommendation(s) or view(s) in this report.

**Disclosure:** - This document has been prepared by Research Department of GEPL Capital Pvt. Ltd. (hereinafter referred to as GEPL Capital) and this report is for personal information of the selected recipient/s and does not constitute to be any investment, recommendation, prospectus, offering circular or legal or taxation advice to you. This research report does not constitute an offer, invitation or inducement to invest in securities or other investments and GEPL Capital is not soliciting any action based upon it. This report is not for public distribution and has been furnished to you solely for your general information and should not be reproduced or redistributed to any other person in any form. This report does not constitute a personal recommendation or take into account the particular investment objectives, financial situations, or needs of individual clients. Before acting on any advice or recommendation in this material, investors should consider whether it is suitable for their particular circumstances and, if necessary, seek professional advice. The price and value of the investments referred to in this material and the income from them may go down as well as up, and investors may realize losses on any investments. Past performance is not a guide for future performance, future returns are not guaranteed and a loss of original capital may occur. GEPL Capital makes no representation or warranty, express or implied, as to, and does not accept any responsibility or liability or obligation with respect to, the fairness, accuracy, completeness or correctness of any information or update information or opinions contained herein. All investments including Future and Options are involving risks and investor should exercise prudence in making their investment decisions. The report should not be regarded by the recipients as a substitute for the exercise of their own judgment. Any opinions expressed in this report are subject to change without notice and may differ or be contrary to opinions expressed by other business areas or GEPL Capital as a result of using different assumptions and criteria. Foreign currency rates of exchange may adversely affect the value, price or income of any security or related instrument mentioned in this report. The information contained in this report has been obtained from sources that are considered to be reliable. However, GEPL Capital has not independently verified the accuracy or completeness of the same. Neither GEPL Capital nor any of its affiliates, its directors or its employees accepts any responsibility of whatsoever nature for the information, statements and opinion given, made available or expressed herein or for any omission therein. GEPL Capital and its affiliates and/or their officers, directors and employees may have similar position in any securities mentioned in this document (or in any related investment) and may from time to time add to or dispose of any such securities (or investment). GEPL Capital specifically prohibits the redistribution of this material in whole or in part without the written permission of GEPL Capital and GEPL Capital accepts no liability whatsoever for the actions of third parties in this regard. GEPL Capital or its director or its research analysts or its associates or his relatives and/or its affiliates and/or employees do not have actual/beneficial ownership of one per cent or more securities of the subject company at the end of the month immediately preceding the date of publication of the research report. Our sales people, traders, and other professionals or affiliates may provide oral or written market commentary or trading strategies to our clients that reflect opinions that are contrary to the opinions expressed herein, and our proprietary trading and investing businesses may make investment decisions that are inconsistent with the recommendations expressed herein.

**Disclaimers in respect of jurisdiction:** This report is not directed to, or intended for distribution to or use by, any person or entity who is a citizen or resident or located in any locality, state, country or other jurisdiction where such Distribution, publication, reproduction, availability or use would be contrary to law or regulation or what would subject GEPL Capital its affiliates to any registration or licensing requirement within such jurisdiction. If this report is inadvertently sent or has reached any individual the same may be ignored and brought to the attention of the sender. This document may not be reproduced, distributed or published for any purposes without prior written approval of GEPL Capital.

**Analyst Certification:** The views expressed in this research report reflect the personal views of the analyst(s) about the subject securities or issues. Compensation of our Research Analysts is not based on any specific merchant banking, investment banking or brokerage service transactions. Research Analysts of this report have not received any compensation from the companies mentioned in the report in the preceding twelve months.

GEPL Capital Private Limited is a SEBI registered Research Analyst entity bearing SEBI Reg. No. "INH000000081" under SEBI (Research Analysts) Regulations, 2014.

**Reg./Corp. Office:** D-21 Dhanraj Mahal, CSM Marg, Colaba, Mumbai 400 001 Contact No +91 22 66182400

**SEBI Reg. No.** NSE/NSEF&O/CD - INB230993934, INF230993934 & INE230993934. BSE/BSE F&O- INB010993934 & INF010993934,

For more information visit us at: [www.geplcapital.com](http://www.geplcapital.com)

**Disclaimer:** Investments in securities market are subject to market risks, read all the related documents carefully before investing. Investors must make their own investment decisions based on their specific goals, financial position & risk appetite. The content provided herewith is purely for investor awareness only