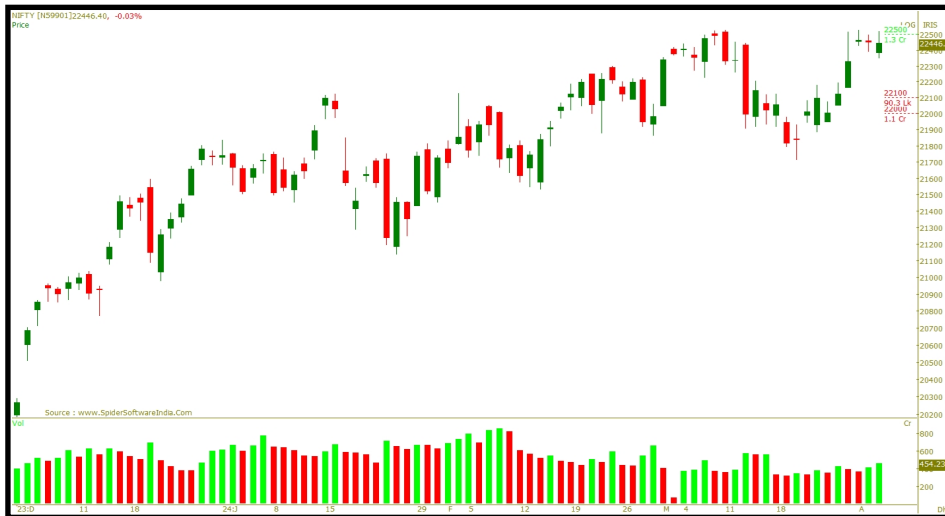


### Market News:

- Crompton Greaves faces a Rs 2.91 crore tax demand from Vasai-Virar Municipal Corp in Maharashtra and plans to appeal the order.
- Adani Green Energy became India's first firm to surpass 10,000 MW in renewable energy, with 10,934 MW operational, including 7,393 MW solar and 2,848 MW added in FY24.
- Chalet Hotels raises Rs 1,000 crore via QIP at Rs 792 per share, with major investors including Smallcap World Fund and SBI Funds.



### Technical Summary:

The trading day began with a gap-down opening influenced by weak global cues. However, the index staged a recovery from lower levels. In the second half, despite efforts, it failed to sustain the 22500 level, drifting downward to settle at 22434.65, marking a loss of -0.08%. The outlook for the index remains positive as long as it maintains support above the key level of 22200.

### Levels to watch:

The Nifty has its crucial resistance at 22600 (Multiple Touches) and 22780 (Key Resistance). While support on the downside is placed at 22300 (Multiple Touches) & 22150 (Key Support).

### What should short term traders expect?

The Index has potential to move higher till 22600 followed by 22780 until the mark of 22300 is protected on the downside.

### Technical Data Points

**NIFTY SPOT:** 22434.65 (-0.08%)

#### TRADING ZONE:

Resistance: 22600 (Multiple Touches) / 22780 (Key Resistance)

Support: 22300 (Multiple Touches) / 22150 (Key Support).

STRATEGY: Bullish till above 22300 (Multiple Touches)

**BANK NIFTY SPOT:** 47624.25 (+0.17)

#### TRADING ZONE:

Resistance: 47850 (Multiple Touches) / 48100 (Key Resistance)

Support: 47250 (Multiple Touches) / 47000 (Key Support)

STRATEGY: Bullish till above 47250 (Multiple Touches)

### Top Gainers (Nifty 50)

SHRIRAMFIN	2556 (3.65%)
NTPC	352.65 (2.28%)
DIVISLAB	3685.7 (1.74%)
TCS	3950.05 (1.71%)
TECHM	1256.5 (1.59%)

### Top Losers (Nifty 50)

NESTLEIND	2555 (-2.60%)
BAJAJ-AUTO	9090 (-2.01%)
DRREDDY	6130.85 (-1.71%)
KOTAKBANK	1733 (-1.39%)
BRITANNIA	4836 (-1.31%)

### 1 Day Change

Gold	69,195 (0.39%) 16:17
Silver	78,010 (1.26%) 16:25
USD-INR	83.43 (0.16%) 16:25
Dow Jones	39,478 (-0.06%)
Nasdaq	18,262.75 (-0.36%)

Bharti Hexacom Limited IPO subscribed 0.31 times till now

[Invest Now](#)